

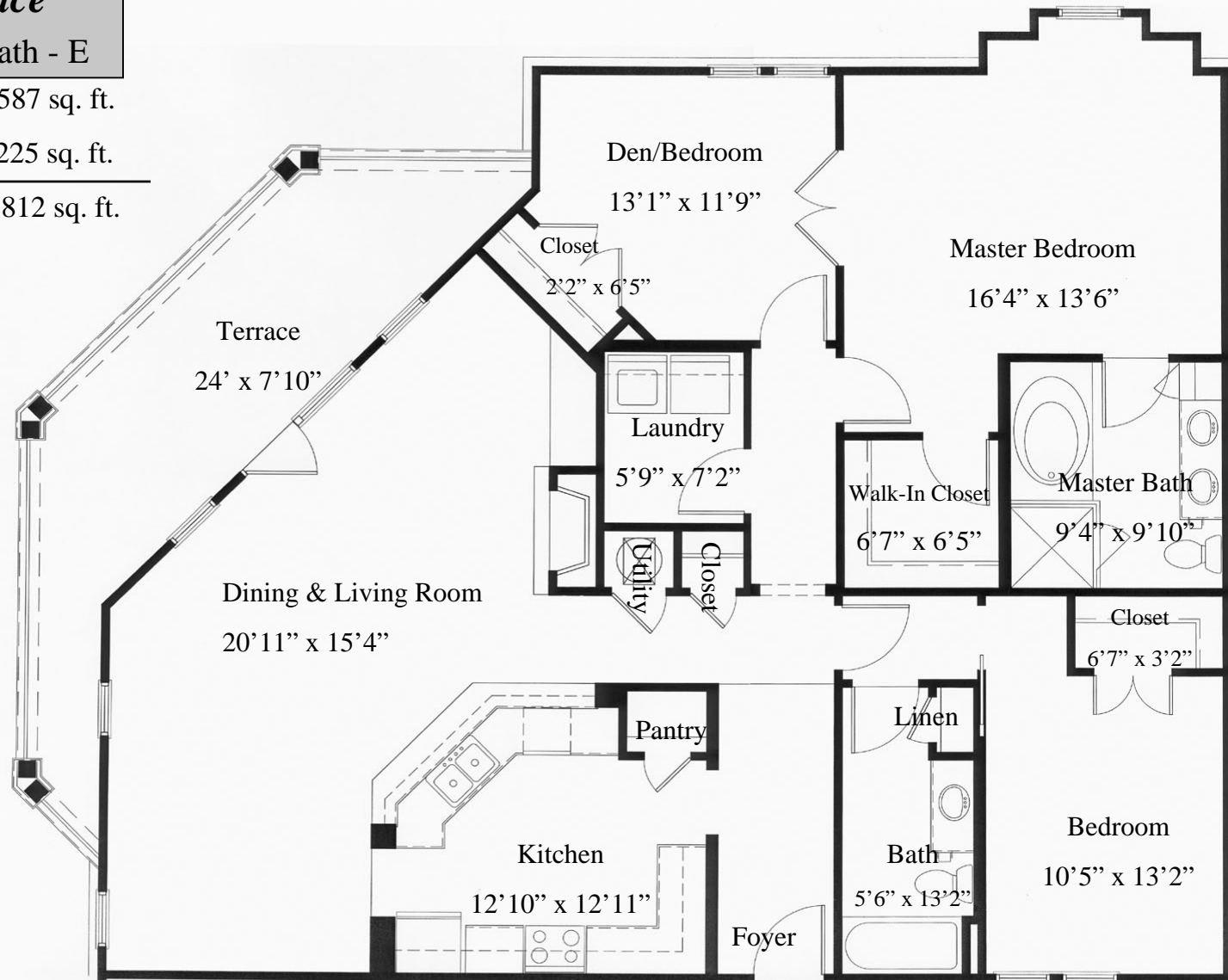
The Terrace

3 Bedroom/2 Bath - E

Living Area.....1,587 sq. ft.

Terrace..... 225 sq. ft.

TOTAL..... 1,812 sq. ft.



Note: This floor plan is located on the second and third floor corners of each building. This floor plan boasts 12' 6" ceilings in the Living & Dining areas of third floor units only. Third floor units also offer an additional storage room off the garage. The gas fireplace is optional. Built-in bookcases are also optional with a gas fireplace selection. French doors from the Master Bedroom into the Den/Bedroom are optional.

Square footages are approximate and are subject to change.